

P-X402
FILTER PUMP

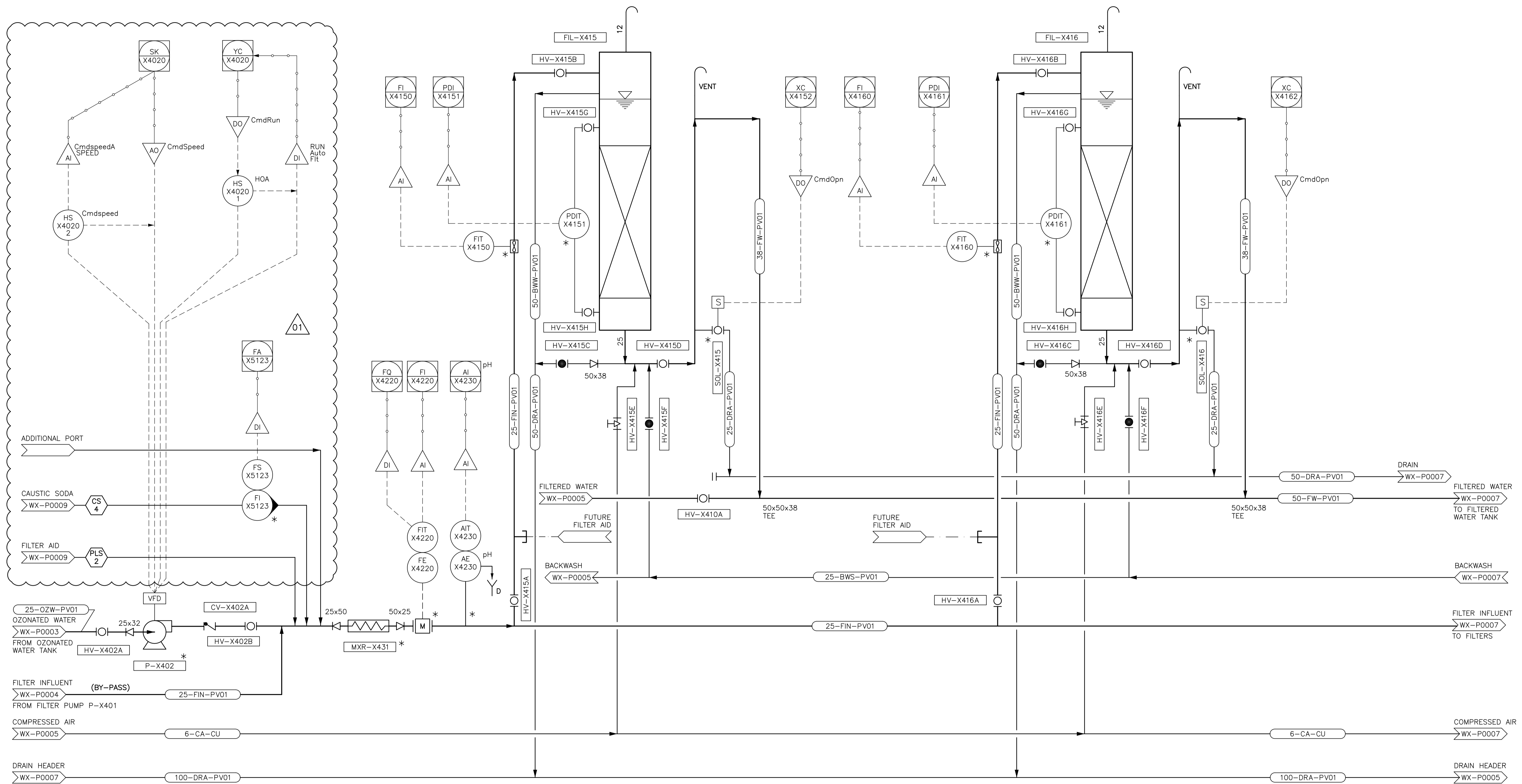
CONTROL: VFD
 CAPACITY: 2.83 m³/h
 HEAD: 10.8m

FIL-X415/ X416
FILTER COLUMNS

HEIGHT: 6.5m
 DIAMETER: 150mm

MXR-X431
STATIC MIXER

SIZE: 50mm
 MATERIAL: PVC



NOTES:

* CITY OF WINNIPEG TO SUPPLY EQUIPMENT/ INSTRUMENTATION. CONTRACTOR TO INSTALL.



ORIGINAL SIGNED BY
 B.L. MOORE
 JUNE 13/14



B.M. ELEV.	CONSTRUCTION COMPLETION DATE: YYYY MM DD		
DESIGNED BY	KG	CHECKED BY	BW
DRAWN BY	JBC	APPROVED BY	BW
SCALE: HORIZONTAL	NTS	RELEASED FOR CONSTRUCTION	
DATE	2014 06 13	DATE	
NO.	REVISIONS	DATE	BY
1	ISSUED FOR ADDENDUM No. 1	14/06/24	JBC
0	ISSUED FOR TENDER	14/06/13	JBC

CH2MHILL

DESIGNED BY: KG
 CHECKED BY: BW
 DRAWN BY: JBC
 APPROVED BY: BW
 SCALE: HORIZONTAL: NTS, VERTICAL: -
 DATE: 2014 06 13

ENGINEER'S SEAL

ORIGINAL SIGNED BY
 S.B. WILLIAMSON
 14/06/13

CONSULTANT DRAWING NUMBER
 WX-P0006

THE CITY OF WINNIPEG
 WATER AND WASTE DEPARTMENT
 ENGINEERING DIVISION

Winnipeg

CITY OF WINNIPEG WATER TREATMENT RESEARCH AND PROCESS OPTIMIZATION FACILITY

FILTER BANK B (SHEET 1 OF 2)
 PROCESS AND INSTRUMENTATION DIAGRAM

SHEET X OF X
 CITY DRAWING NUMBER
 1-0601X-P0005-01-01